

Features:

- n Isolated mounting base 3000V~
- n Pressure contact technology with Increased power cycling capability
- n Space and weight saving
- n UL Recognized

Typical Applications

- n Various rectifiers
- n DC supply for PWM inverter

V _{RRM}	Type
800V	DSKE 601/08
1000V	DSKE 601/10
1200V	DSKE 601/12
1400V	DSKE 601/14
1600V	DSKE 601/16
1800V	DSKE 601/18

SYMBOL	CHARACTERISTIC	TEST CONDITIONS	T _J (°C)	VALUE			UNIT
				Min	Type	Max	
I _{F(AV)}	Mean forward current	180° half sine wave 50Hz Single side cooled, T _C =100°C	150			600	A
I _{F(RMS)}	RMS forward current					942	A
I _{RRM}	Repetitive peak current	at V _{RRM}	150			45	mA
I _{FSM}	Surge forward current	V _R =60%V _{RRM} , t=10ms half sine	150			19.0	kA
I ² t	I ² t for fusing coordination					1805	10 ³ A ² s
V _{FO}	Threshold voltage		150			0.75	V
r _F	Forward slope resistance					0.28	mΩ
V _{FM}	Peak forward voltage	I _{FM} =1800A	25			1.50	V
R _{th(j-c)}	Thermal resistance Junction to case	Single side cooled per chip				0.065	°C/W
R _{th(c-h)}	Thermal resistance case to heatsink	Single side cooled per chip				0.020	°C/W
V _{iso}	Isolation voltage	50Hz, R.M.S, t=1min, I _{iso} : 1mA(MAX)		3000			V
F _m	Terminal connection torque(M12)			12		14	N·m
	Mounting torque(M6)			4.5		6.0	N·m
T _{vj}	Junction temperature			-40		150	°C
T _{stg}	Stored temperature			-40		125	°C
W _t	Weight				2700		g

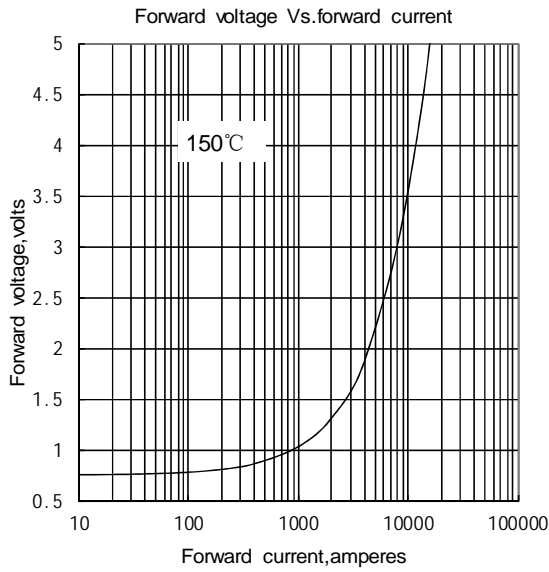


Fig.1

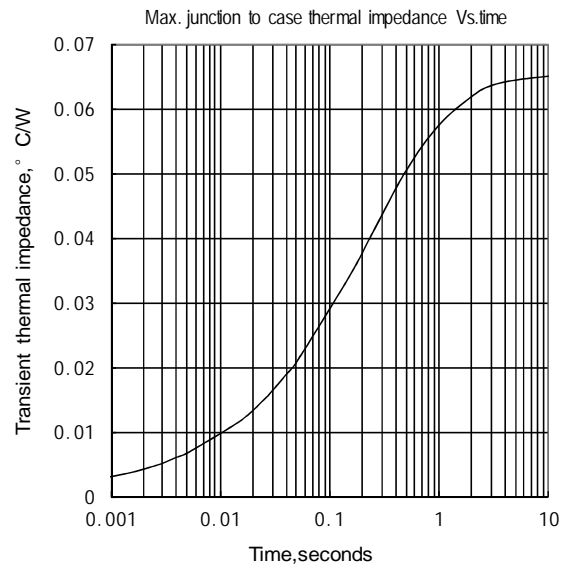


Fig.2

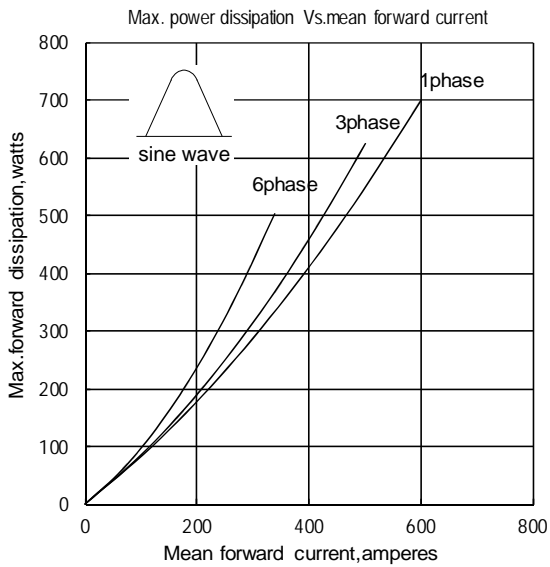


Fig.3

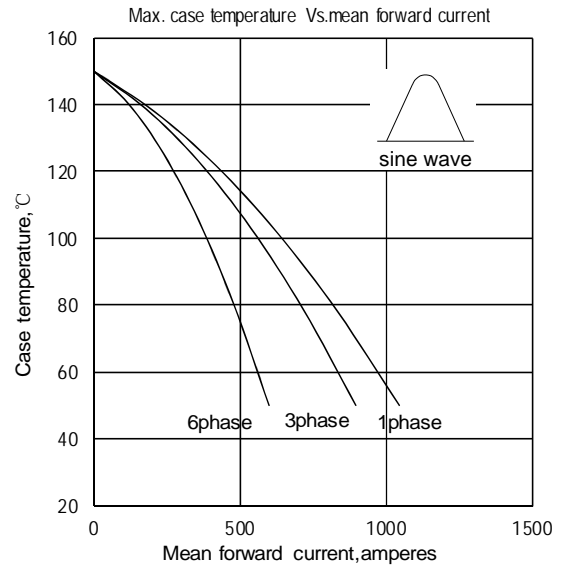


Fig.4

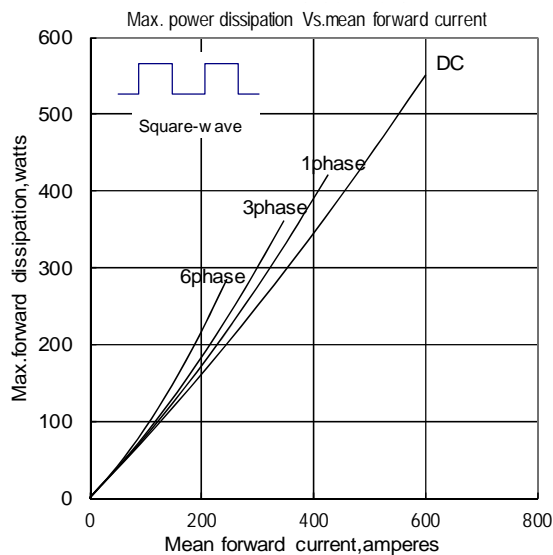


Fig.5

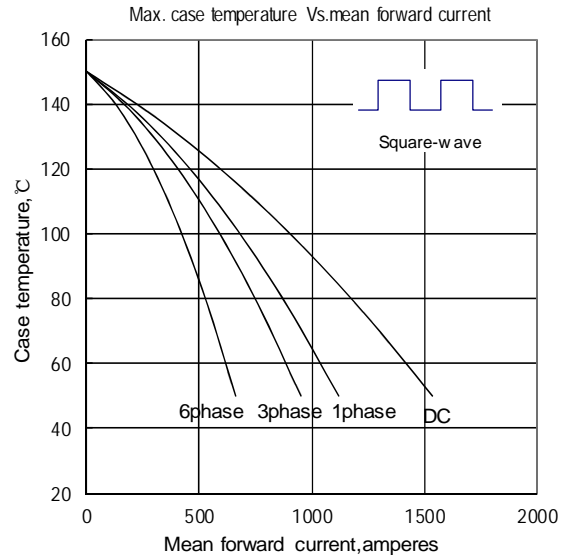


Fig.6

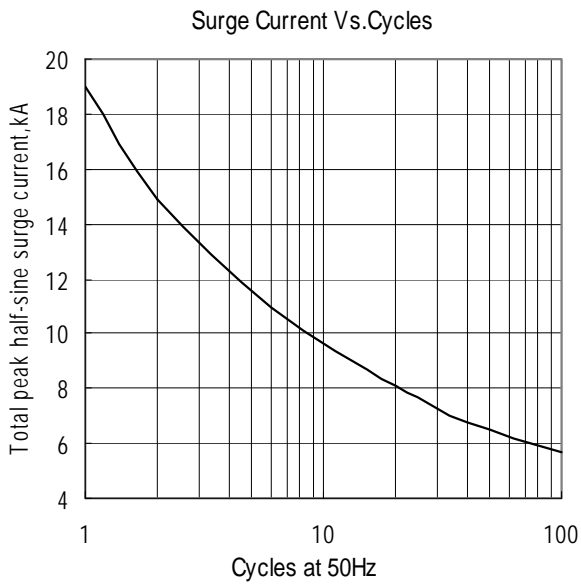


Fig.7

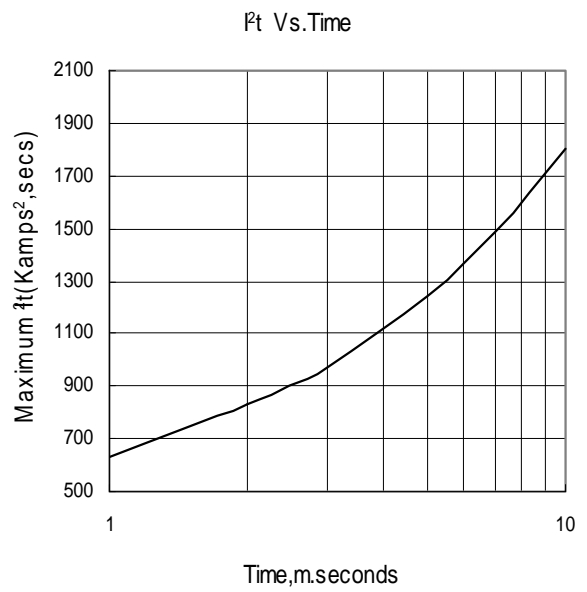
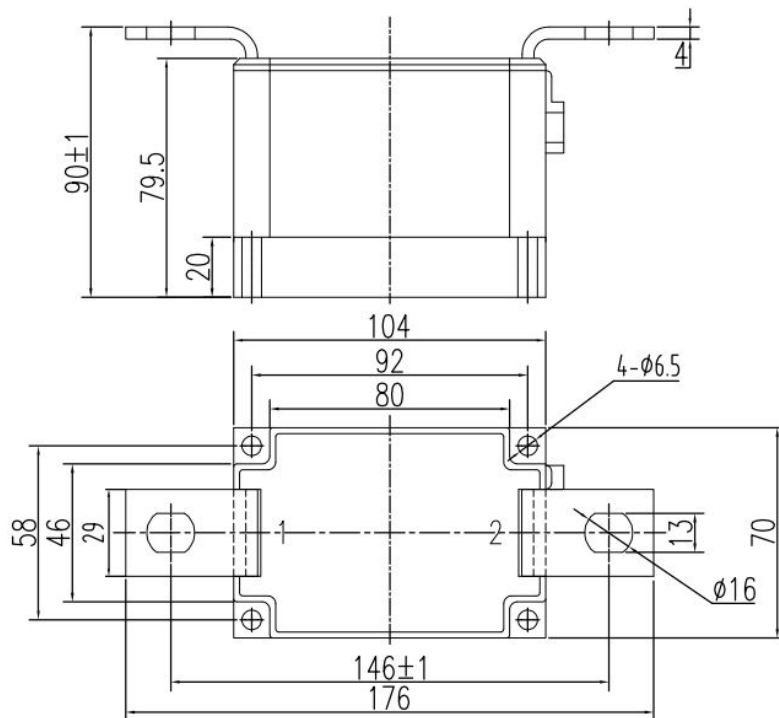


Fig.8

Outline:



Unmarked dimensional tolerance: ±0.5mm

